



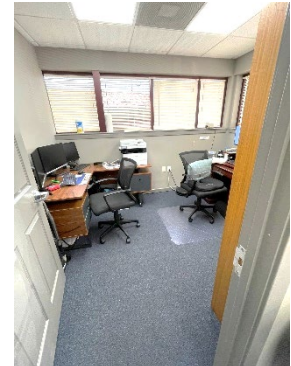
MACKINTOSH, Inc.

COMMERCIAL BROKERAGE

**Two Medical Office Condos for Sale
G1 @ \$135,741 & G2 @ \$136,261**

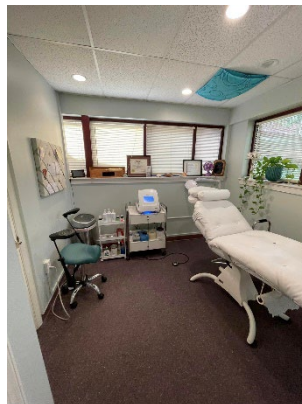
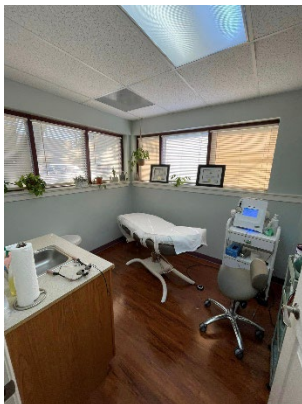
Presents:

**Frederick Medical Center Condos – G1(522 SF) & G2 (524 SF)
801 Toll House Avenue, Frederick, MD 21701**



Two Medical / Retail Condos in Frederick Maryland located walking distance to Frederick Memorial Hospital. Located in Frederick Medical Center. Plenty of Parking Available in a Large Parking Lot. Unit G1 – Currently Medical User is 522 SF with a Wait Room at the entrance, a Receptionist Office, Two Medical Offices, a Storage Room, and a Restroom. Unit G2 – Currently Accounting Office is 524 SF and contains a Receptionist and Wait Room, Two Offices, and a Restroom. Both Units can be purchased together.

Additional Pictures:



Jody Bell - Call: 240-674-3937

Email: Jody@ngreen.com

or Nancy Green - 301-748-3321

Email: Nancy@ngreen.com

FOR ADDITIONAL INFORMATION CONTACT:

Mackintosh Commercial Brokerage

262 W. Patrick Street

Frederick, Maryland 21701

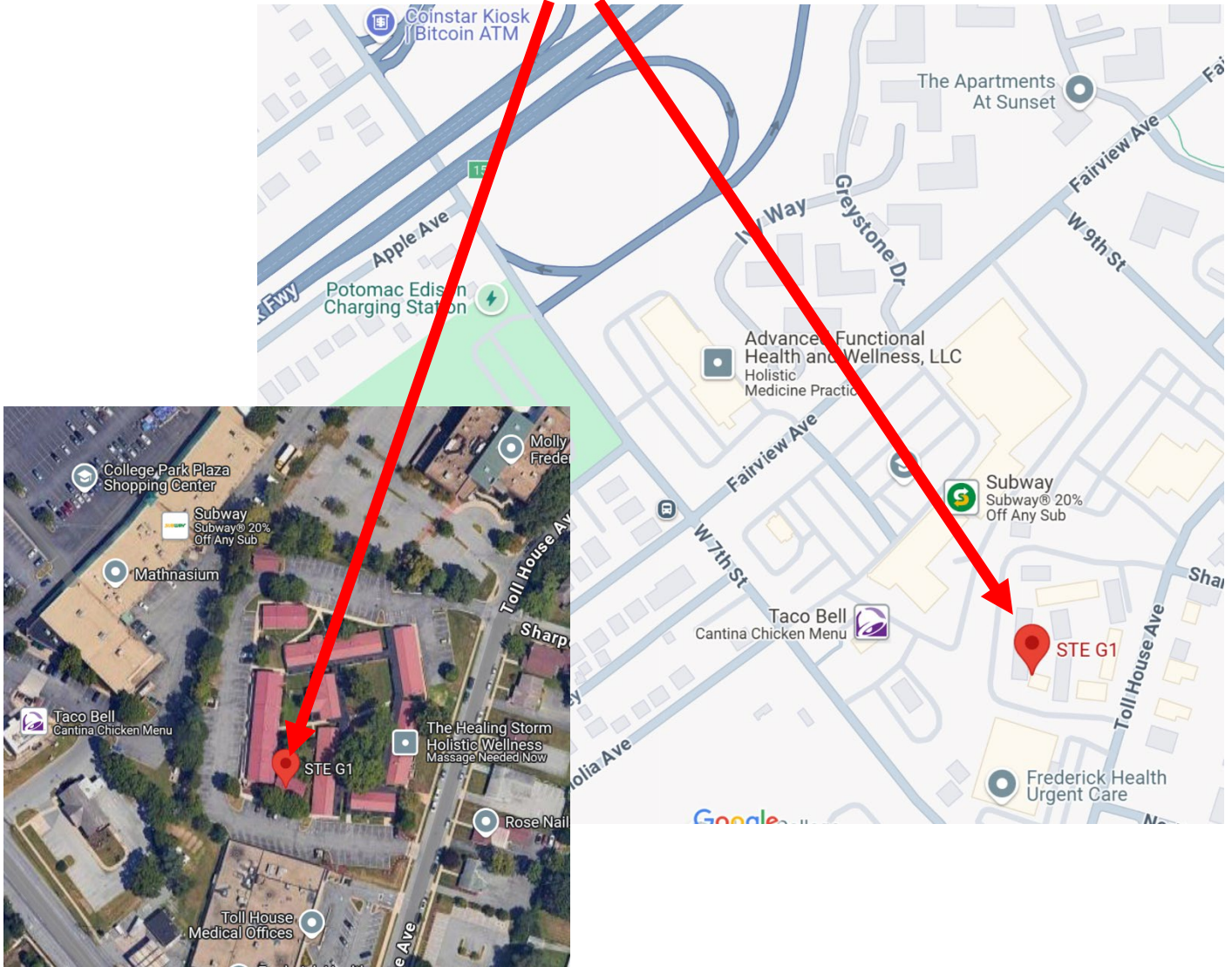
O: 1-800-727-SOLD ext.235

Fax #: 301-846-4317

Email: Nancy@ngreen.com

Website: <http://www.ngreen.com/>

801 Toll House Avenue Location



Directions:

From Route 15 North, move over to right lane and turn right at 7th Street (Exit 15). Continue toward Frederick Memorial Hospital and turn left onto Toll House Avenue. Turn Left into Frederick Medical Center and continue around the Center until you get to Suite G1/G2.

FOR ADDITIONAL INFORMATION CONTACT:

Jody Bell - Call: 240-674-3937

or Nancy Green - 301-748-3321

Email: Jody@ngreen.com

Mackintosh Commercial

262 W. Patrick Street

Frederick, Maryland 21701

Broker: 1-800-727-SOLD

Fax # : 1-240-489-7932

Email : Nancy@ngreen.com

www.NGreen.com